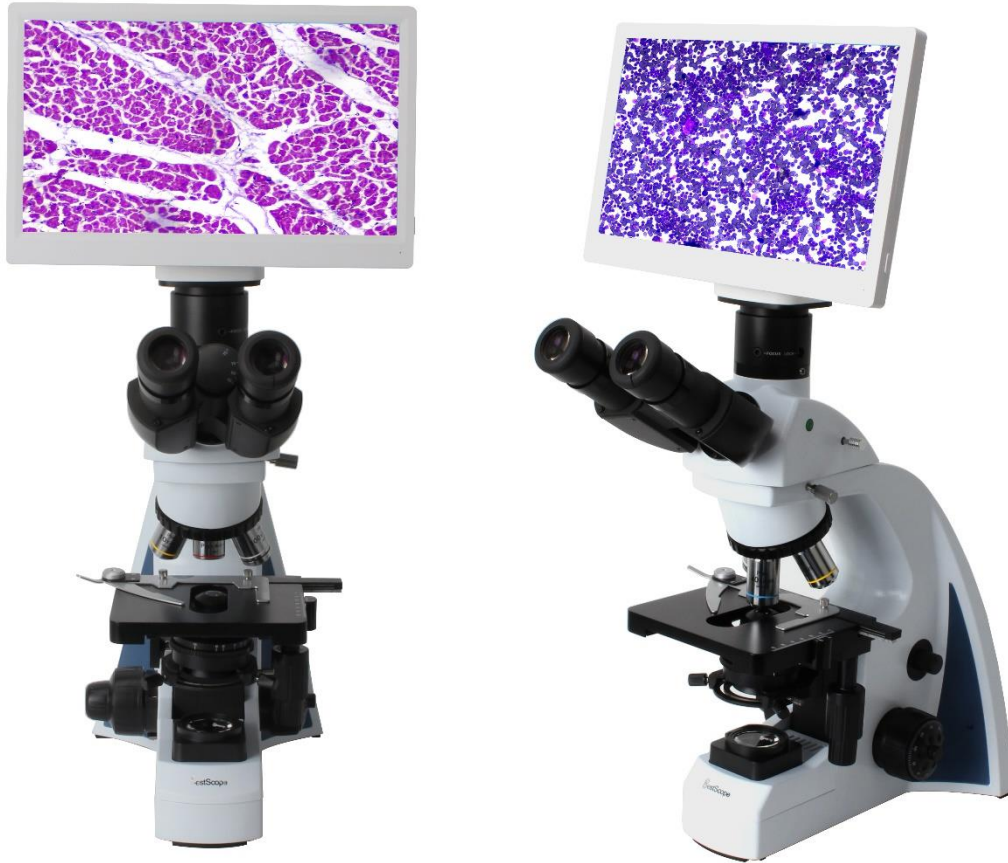


## BLM2-241 LCD Digital Biological Microscope



### Introduction

BLM2-241 digital LCD biological microscope has a built-in 6.0MP high sensitive camera and 11.6" 1080P full HD retina LCD screen. Both traditional eyepieces and an LCD screen can be used for convenient and comfortable viewing. The microscope makes the observation more comfortable and thoroughly resolves the fatigue caused by using a traditional microscope for a long time.

BLM2-241 not only feature HD LCD display to reverting genuine photo and video, but also feature quick and easy snapshots, short videos and measurement. It has integrated magnification, digital enlarge, imaging display, photo and video capture&storage on the SD card, it also can be connected to PC via USB2.0 cable and control by software.

### Feature

1. Infinite optical system and high quality 10x/22mm eyepiece and infinite plan achromatic objectives.
2. 6.0 megapixel HDMI digital camera, images and videos can be easily stored on the SD card without computers, can improve the efficiency of research and analysis, the camera has measurement functions.
3. 11.6-inch HD digital LCD screen, high definition and high quality images, easy for people to share.
4. LED lighting system, long working life and save energy.
5. Two types of observation modes: binocular eyepiece and LCD screen, can meet different needs.

## Application

BLM2-241 LCD digital microscope is an ideal instrument in biological, pathological, histological, hematological, bacterial, immune, pharmacological and genetic fields. It can be widely used in medical and sanitary establishments, such as hospitals, clinics, laboratories, medical academies, colleges, universities and related research centers.

## Specification

Item	Specification		BLM2-241
Digital Parts	Camera Model	BLC-600 Plus	●
	Sensor	Sony IMX307 CMOS Sensor	●
	Photo Resolution	6.0 Mega Pixel (3264 × 1840)	●
	Video Resolution	60fps@1920×1080	●
	Sensor Size	1/2.8 Inches	●
	Pixel Size	2.8um × 2.8um	●
	LCD Screen	11.6 Inches HD LCD Screen, Resolution is 1920 × 1080	●
	Data Output	USB2.0, HDMI	●
	Storage	SD Card (8G)	●
	Exposure time	0.001 sec ~ 10.0 sec	●
	Exposure Mode	Automatic & Manual	●
	White balance	Automatic	●
	Packing Dimension	305mm×205mm×120mm, 3kgs	●
Optical Parts	Viewing Head	Seidentopf trinocular head, 30° inclined, Interpupillary 48-75mm, Light distribution: 100: 0 and 50:50(eyepiece: trinocular tube), 30mm tube	●
	Eyepiece	Wide Field Eyepiece WF10×/22mm	●
		Wide Field Eyepiece WF15×/16mm, WF20×/12mm	○
		Eyepiece micrometer 0.1mm (only can be used with 10× eyepiece)	○
	Objective	Infinite Plan Achromatic Objectives 4×, 10×, 40×, 100×	●
		Infinite Plan Achromatic Objectives 2×, 20×, 60×	○
	Nosepiece	Backward Quadruple Nosepiece	●
		Backward Quintuple Nosepiece	○
	Stage	Double Layers Mechanical Stage 140mm×140mm/ 75mm×50mm	●
		Rackless Double Layers Mechanical Stage 150mm×139mm, Moving Range 75mm×52mm	○
	Condenser	Sliding-in Centerable Condenser NA1.25	●
		Swing-out Condenser NA 0.9/ 0.25	○
		Dark Field Condenser NA 0.7-0.9 (Dry, used for objectives except 100×)	○
		Dark Field Condenser NA 1.25-1.36 (Oil, used for 100× objectives)	○
	Focusing System	Coaxial Coarse & Fine Adjustment, Fine Division 0.002mm, Coarse Stroke 37.7mm per Rotation, Fine Stroke 0.2mm per Rotation, Moving Range 20mm	●
Illumination	1W S-LED Lamp, Brightness Adjustable	●	
	6V/20W Halogen Lamp, Brightness Adjustable	○	

		Kohler Illumination	○
	Other accessories	Simple Polarizing Set (Polarizer and Analyzer)	○
		Phase Contrast Kit BPHE-1 (Infinite Plan 10×, 20×, 40×, 100× phase contrast objective)	○
	Video Adapter	0.5× C-mount	●
	Packing	1pc/carton, 35cm*35.5cm*55.5cm, gross weight: 12kg	●

Note: ● Standard Outfit, ○ Optional

## Sample Image

