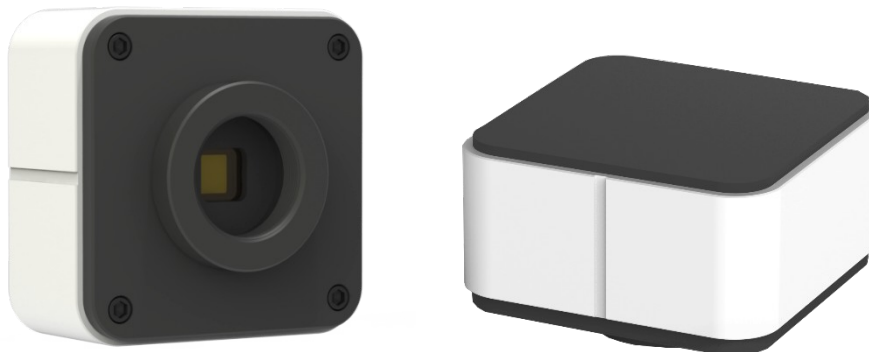


## BUC2D Series USB2.0 Microscope Camera



With Innovative customized ISP technology, the BUC2D series cameras' frame rate has been greatly improved. The frame rate of uncompressed original imaging is 2MP@30fps, 5MP@22fps, 12MP@15fps. This series digital cameras provide simple and economical microscopy imaging. They are widely used in academic and medical fields for precision and high resolution microscope image capturing and processing.

### Specification

Model	BUC2D-200C	BUC2D-500C	BUC2D-1200C
Sensor Model	Sony, IMX323LQN-C	Sony, IMX335LQN-C	Panasonic, MN34120
Sensor Size	1/2.9"	1/2.8"	1/2.33"
Resolution	2MP, 1920x1080	5MP, 2560x1920	12MP, 4000x3000
Pixel Size	2.8 $\mu$ m $\times$ 2.8 $\mu$ m	2.0 $\mu$ m $\times$ 2.0 $\mu$ m	1.335 $\mu$ m $\times$ 1.335 $\mu$ m
Frame Rate	30fps	22fps	15fps
Color/Mono	Color		
Shutter Type	Rolling Shutter		
Exposure Mode	Auto/Manual		
Picture Format	TIFF/JPG/PNG/DICOM		
Operating System	Windows 7/8/10 (32 Bit/64 Bit)		
PC Software	Capture 2.0		
SDK	C/C++, C#, Directshow		
Optical Interface	C-Mount		
Data Interface	USB2.0		
Operating Temperature	0-60 $^{\circ}$ C		
Operating Humidity	10%-85%		
Camera Size	68X68X42.5(mm)		
Camera Weight	253g		
Note:	Capture 2.0 software does not support the dark field image processing module, real-time image		

stitching and real-time depth of field fusion function module when it is used with BUC2D cameras.

## Sample Images

