

BS-2044F(LED) LED Fluorescent Biological Microscope



BS-2044FB(LED)



BS-2044FT(LED)

Introduction

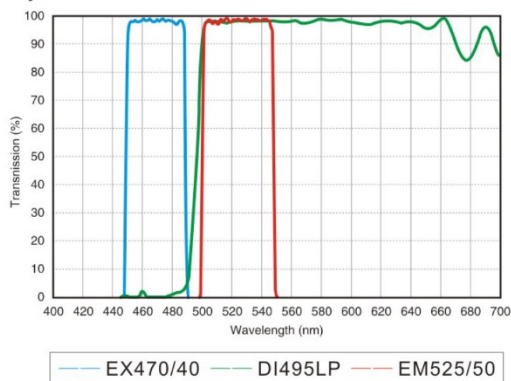
BS-2044F(LED) series LED fluorescent microscopes are high quality biological microscopes, which are specially designed for biological and medical research and teaching experiments for colleges, universities, laboratories and related institutes. With infinity color correction optical system and excellent Koehler illumination system, BS-2044F(LED) can get uniform illumination, clear and bright images at any magnification. These microscopes can be used for teaching experiments, pathological examinations and clinical diagnosis. With outstanding functions, excellent cost performance, easy and comfortable operation, BS-2044F(LED) series microscopes present over expected and splendid micro images. BS-2044F(LED) with B4 LED fluorescence module can be used for diagnosis of tuberculosis (TB).

Feature

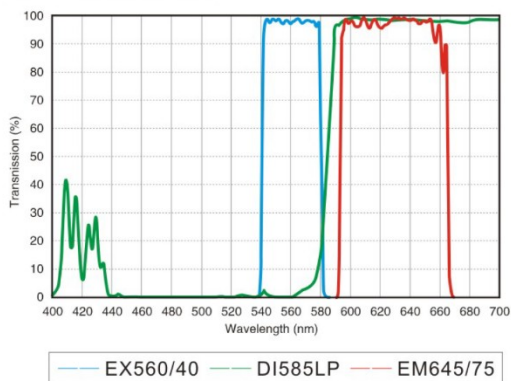
1. Infinite Color Corrected Optical System provides sharp and comfortable images.
2. Wide-field high eye-point eyepieces and plan achromatic objectives and semi-APO fluorescent objectives make the effect of fluorescence observation more perfect.
3. Outstanding appearance design and ergonomics structure design, long time use without feeling tired.
4. With the design of security lock and safe limits, it is much more secure, stable and can be kept for long.
5. Various microscopic examinations can be fulfilled, such as brightfield, dark-field, phase contrast, fluorescence, simple polarizing and so on.
6. LED fluorescence excitation illumination, breaking through the traditional type, is more stable, low radiation and

long working life. Special fluorescent filter(B4) for tuberculosis examination is available. Except for TB test module B4, you could select B1, G1, UV2 fluorescence modules according to different applications. You can also choose several modules and replace them when you need.

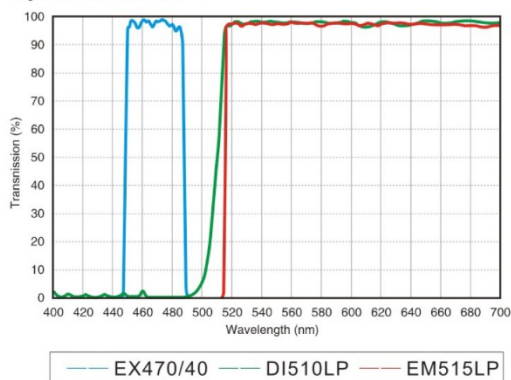
B1: EGFP/GFP/FITC /Alexa Fluor@488
Cy2@/DIO/Fluo-4



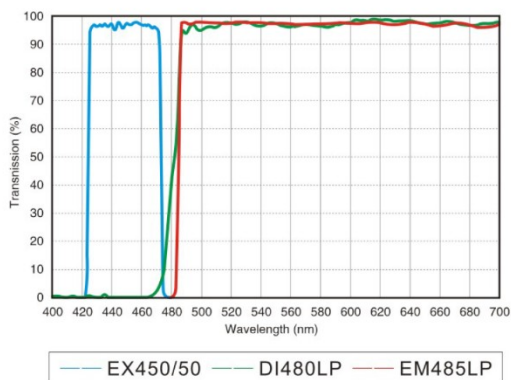
G1: TexasRED@/TexasRed@-X/Cy3.5
Mito Tracker@Red



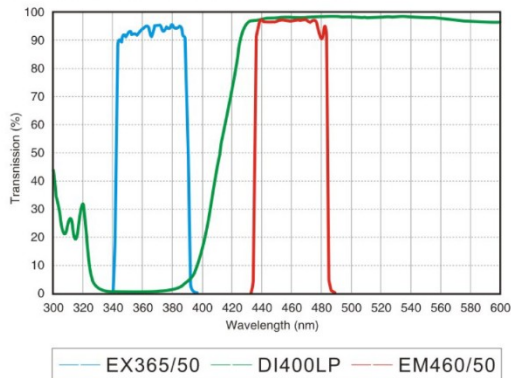
B2: EGFP/GFP/FITC /Alexa Fluor@488
Cy2@/DIO/Fluo-4



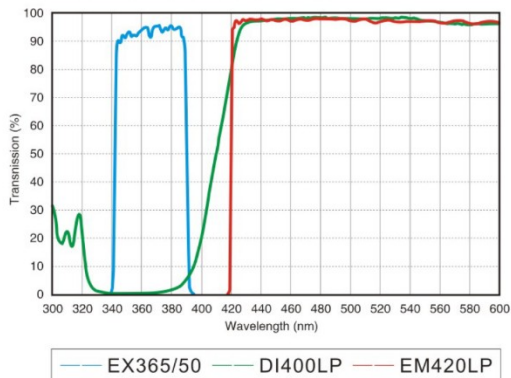
B4: Auramine O/wtGFP



UV1: DAPI/Hoechst 33342/33258 AMCA/
AMCA-X Blue/ Alexa Fluor® 350



UV2: DAPI/Hoechst 33342/33258 AMCA/
AMCA-X Blue/ Alexa Fluor® 350



7. The Single-band LED fluorescent attachment have light intensity control function, with 6V/2A DC power supply,

external transformer, easy connection and safe use. There is a switch and easy to change from fluorescent observation to bright field observation with transmitted illumination.



8. Semi-APO fluorescent objectives are optional. These objectives have large numerical aperture, provide high-resolution, high contrast microscopic images. We also can provide objectives without cover slip corrections, which is used to observe smear slides.



Infinite Plan Semi-APO fluorescent objectives without cover slip corrections



Infinite Plan Semi-APO fluorescent objectives with 0.17mm cover slip corrections

Application

BS-2044F(LED) series biological microscopes are ideal instruments for biological, pathological, histological, bacterial, immune, pharmacological and genetic fields. They can be widely used in education, medical and sanitary establishments, such as schools, hospitals, clinics, laboratories, medical academies, colleges, universities and related teaching labs and research centers.

Specification

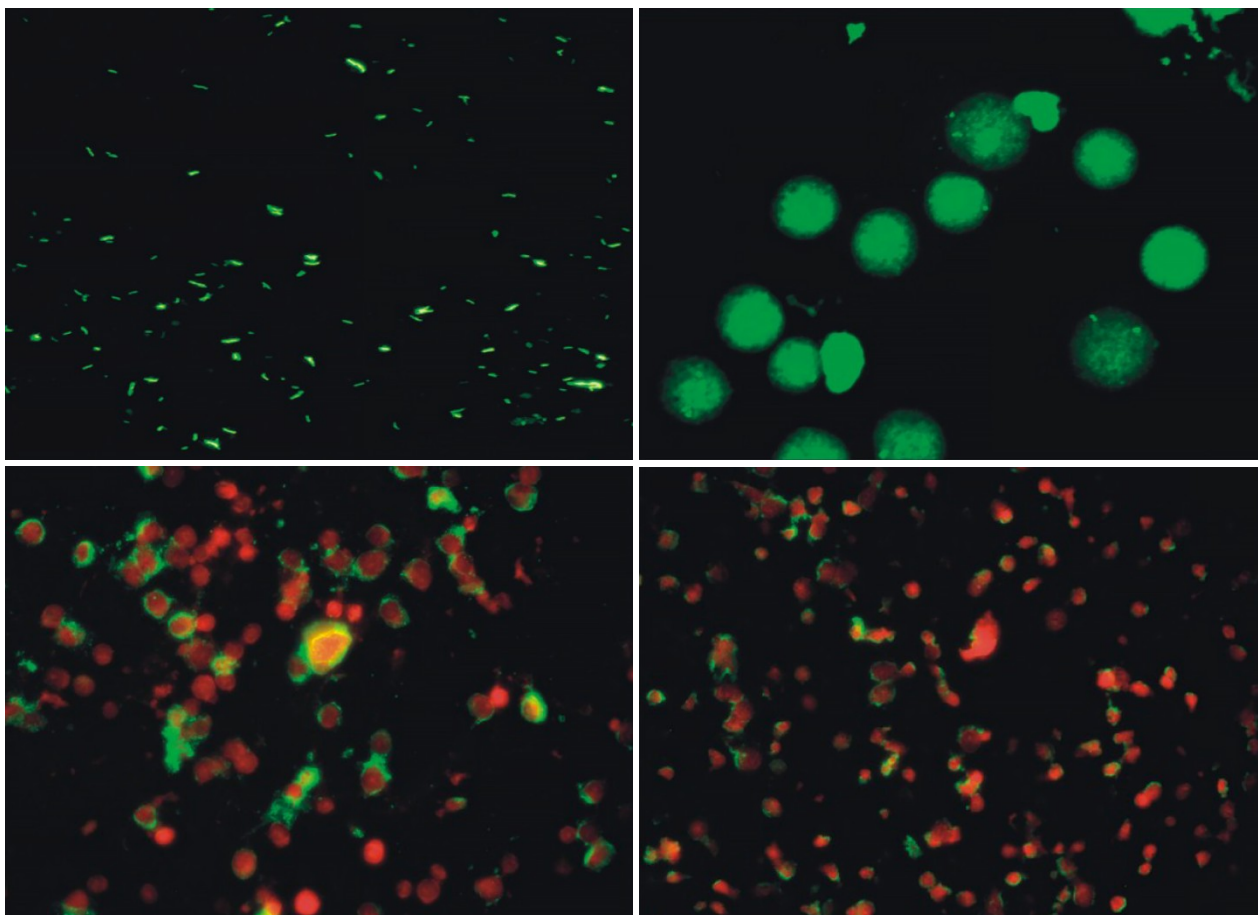
Item	Specification	BS-2044FB (LED)	BS-2044FT (LED)	
Optical System	Infinite Color Corrected Optical System, parfocal distance 45mm	●	●	
Viewing Head	Seidentopf binocular head, 30° inclined, Interpupillary 50-75mm, 360° rotatable, eyepiece tube: Ø30mm	●	○	
	Seidentopf trinocular head, 30° inclined, Interpupillary 50-75mm, 360° rotatable, Fixed light splitting ratio: Eyepiece:Trinocular=8:2, eyepiece tube: Ø30mm	○	○	
	Seidentopf trinocular head(dedicated for fluorescence), 30° inclined, Interpupillary 50-75mm, 360° rotatable, Fixed light splitting ratio: Eyepiece:Trinocular=5:5, eyepiece tube: Ø30mm	○	●	
Eyepiece	High eyepoint wide field plan eyepiece PL 10×/22mm with adjustable diopter ±5	●	●	
	High eyepoint wide field plan eyepiece PL 10×/22mm with adjustable diopter ±5, with eyepiece micrometer	○	○	
	Eyepiece pointer	○	○	
	Eyepiece micrometer	○	○	
Objective	Infinite Plan Achromatic Objectives	4×, NA=0.10, WD=11.9mm	●	●
		10×, NA=0.25, WD=12.1mm	●	●
		20×, NA=0.45, WD=1.5mm	○	○
		40×(S), NA=0.65, WD=0.36mm	●	●
		60×(S), NA=0.85, WD=0.3mm	○	○
		100×(S, Oil), NA=1.25, WD=0.18mm	●	●
	Infinite Plan Phase Contrast Objective	10×, NA=0.25, WD=12.1mm	○	○
		20×, NA=0.45, WD=1.5mm	○	○
		40×(S), NA=0.65, WD=0.36mm	○	○
		100×(S, Oil), NA=1.25, WD=0.18mm	○	○
	Infinite Plan Semi-Apochromatic Fluorescence Objectives	4×, NA=0.13, WD=18.5mm	○	○
		10×, NA=0.30, WD=10.6mm	○	○
		20×, NA=0.50, WD=2.33mm	○	○
		40×(S), NA=0.75, WD=0.6mm	○	○
	100×(S, Oil), NA=1.28, WD=0.21mm	○	○	
Nosepiece	Reversed Quadruple Nosepiece	●	●	

	Reversed Quintuple Nosepiece	<input type="radio"/>	<input type="radio"/>
Stage	Double Layers Mechanical Stage 150mm×140mm, moving range 76mm×50mm, double slide holder, accuracy: 0.1mm	<input checked="" type="radio"/>	<input checked="" type="radio"/>
	Rackless Double Layers Mechanical Stage 150mm×162mm, moving range 76mm×50mm, double slide holder, accuracy: 0.1mm, Wear-resistant and anti-corrosion treatment on the stage surface	<input type="radio"/>	<input type="radio"/>
Condenser	N.A.1.25 Koehler illumination condenser (with plug-in phase contrast and dark field plate slot), condenser preset center and height adjustable	<input checked="" type="radio"/>	<input checked="" type="radio"/>
Focusing	Low position coaxial focusing system, moving range 30mm, with upper limit and tightness adjustment, fine division 0.002mm	<input checked="" type="radio"/>	<input checked="" type="radio"/>
Transmitted Illumination	Adaptive 100V-240V, AC50/60Hz wide range voltage, single high brightness 3W LED (preset center), light intensity can be continuously adjusted	<input checked="" type="radio"/>	<input checked="" type="radio"/>
Mercury Reflected Illumination	Mercury reflected fluorescent illuminator, 100W mercury lamp house, 100W DC mercury bulb (OSRAM/ Chinese brand), with B1, G1 fluorescent filters	<input type="radio"/>	<input type="radio"/>
LED Fluorescent Reflected Illumination	B1 band-pass type fluorescence module, with intensity adjusting knob, and switch knob for bright field and fluorescence, central wavelength:470nm	<input checked="" type="radio"/>	<input checked="" type="radio"/>
	G1 band-pass type LED fluorescence module, with intensity adjusting knob, and switch knob for bright field and fluorescence, central wavelength: 560nm	<input type="radio"/>	<input type="radio"/>
	B4 LED fluorescence module dedicated for TB, with intensity adjusting knob, and switch knob for bright field and fluorescence, central wavelength: 455nm	<input type="radio"/>	<input type="radio"/>
	UV2 ultraviolet long-pass type LED module, with intensity adjusting knob, and switch knob for bright field and fluorescence, central wavelength: 365nm	<input type="radio"/>	<input type="radio"/>
	Other various LED module for option, which can be custom-tailor according to the needs of clinical diagnosis.	<input type="radio"/>	<input type="radio"/>
Filters	Blue filter Φ45mm	<input type="radio"/>	<input type="radio"/>
	Green filter Φ45mm	<input type="radio"/>	<input type="radio"/>
	Yellow filter Φ45mm	<input type="radio"/>	<input type="radio"/>
	Neutral filter Φ45mm	<input type="radio"/>	<input type="radio"/>
Polarizing Kit	Polarizer	<input type="radio"/>	<input type="radio"/>
	Analyzer	<input type="radio"/>	<input type="radio"/>
Dark Field Plate	Dark field insert plate (used for 4x-40x objectives)	<input type="radio"/>	<input type="radio"/>
Centering Telescope	Centering TelescopeΦ23.2mm (used with phase contrast plate and objective)	<input type="radio"/>	<input type="radio"/>
Phase Contact Plate	10x, 40x Phase Contact Insert Plate (used for 10x, 40x phase contrast objectives)	<input type="radio"/>	<input type="radio"/>
	20x, 100x Phase Contact Insert Plate (used for 20x, 100x phase contrast objectives)	<input type="radio"/>	<input type="radio"/>
C-mount Adapter	0.35x C-mount adapter, adjustable	<input type="radio"/>	<input type="radio"/>
	0.5x C-mount adapter, adjustable	<input type="radio"/>	<input type="radio"/>
	1x C-mount adapter, adjustable	<input type="radio"/>	<input type="radio"/>
	Trinocular tube for digital eyepiece (Φ23.2mm)	<input type="radio"/>	<input type="radio"/>
Packing	2 cartons/set, 58x56x28cm, GW: 10kgs, NW: 8kgs; 51x31x49cm, GW: 11kgs,	<input checked="" type="radio"/>	<input checked="" type="radio"/>

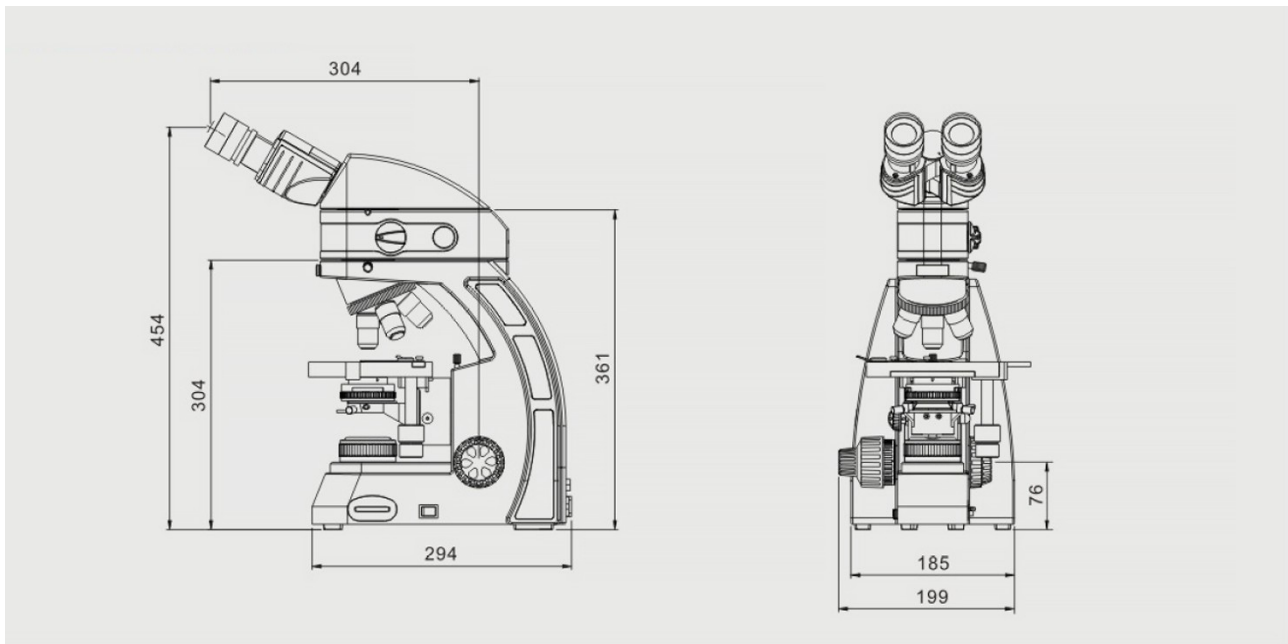
	NW: 9kgs		
--	----------	--	--

Note: ● Standard Outfit, ○ Optional

Sample Images



Dimension



Unit: mm